

## HMI with 15" TFT display

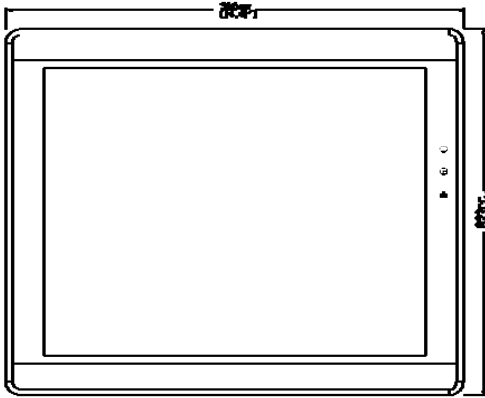


### Feature

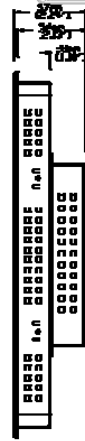
- 15" 1024 x 768 TFT LCD, LED Backlight
- Fan-less Cooling System
- COM2 and COM3 RS-485 support MPI 187.5K please use one at one time
- Support SD card expand storage capacity
- Com1 / Com3 RS485 built-in isolator
- Com1 and Com3 [RS485]2W support MPI
- NEMA4 / IP65 Compliant Front Pane

<b>Display</b>	Display	15" TFT
	Resolution	1024 x 768
	Brightness (cd/m <sup>2</sup> )	400
	Contrast Ratio	700:1
	Backlight Type	LED
	Backlight Life Time	>50,000 hrs
	Colors	16.2M
<b>Touch Pane</b>	Type	4-wire Resistive Type
	Accuracy	Active Length(X)±2%, Width(Y)±2%
<b>Memory</b>	Flash(MB)	128
	RAM	256
<b>Processor</b>		Cortex A8 32Bit RISC 600MHz
<b>I/O Port</b>	SD Card Slot	SD/SDHC
	USB Host	USB 2.0 x 1
	USB Client	USB 2.0 x 1
	Ethernet	1 RJ45 port (10/100 Base-T)
	COM Port	Com1: RS-232/RS-485 2w/4w, Com3: RS-485 2w
<b>RTC</b>		Built-in
<b>Power</b>	Input Power	24±20%VDC
	Power Consumption	1000mA@24VDC
	Voltage Resistance	500VAC (1min)
	Isolation Resistance	Exceed 50MΩ at 500VDC
<b>Specificatio</b>	Vibration Endurance	10 to 25Hz(X,Y,Z direction 2G 30mins)
	Shell material	aluminum
	Dimensions WxHxD	366 x 293 x 57mm
	Panel Cutout	352 x 279 mm
<b>Environment</b>	Weight	Approx. 2.75 kg
	Protection Structure	NEMA4 / IP65
	Storage Temperature	-20°~60°C (-4°~ 140°F)
	Operating Temperature	0°~ 50°C (32°~ 122°F)
<b>Certificate</b>	Relative Humidity	10% ~ 90% @ 40°C (non-condensing)
	CE	EN 55022:2010, EN 55024:2010
		EN 61000-3-2:2006+A2:2009, EN 61000-3-3: 2008 AS/NZS CISPR 22:2009+A1:2010
<b>Software</b>		EasyBuilder Pro V4.00.01 or later

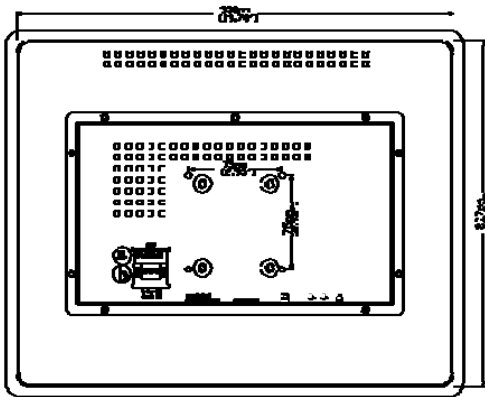
# MT8150iE



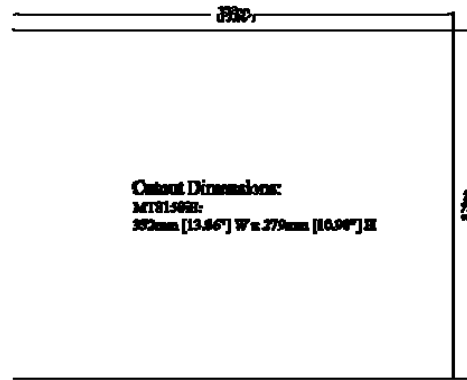
Front View



Side View



Rear View



Output Dimensions:  
 MT8150iE:  
 392mm [15.43"] W x 279mm [10.94"] H



Bottom View

a	Fuse
b	Power connector
c	VESA 75mm fixed hole
d	Com1 RS485 2W/4W, Com3 RS485 2W
e	Com1 RS232
f	SD card
g	USB Client
h	USB Host
i	Ethernet

## Ordering Information

□ MT8150iE:  
 15" 1024x768 TFT LCD HMI, built-in 128MB / 256MB DDR2 RAM

### COM PORT1

PIN#	Symbol	COM1[RS232]
1	Not used	
2	RxD	Received Data
3	TxD	Transmitted Data
4	Not used	
5	GND	Signal Ground
6	Not used	
7	RTS	Ready to send output
8	CTS	Clear to send input
9	Not used	

### COM PORT2

PIN#	Symbol	COM1	COM1	COM3
		[RS485]2w	[RS485]4w	[RS485] 2w
1	Rx-	Data-	Rx-	
2	Rx+	Data+	Rx+	
3	Tx-		Tx-	
4	Tx+		Tx+	
5	GND	Ground 1		
6	Not used			
7	Data-			Data-
8	Data+			Data+
9	GND			Ground 2